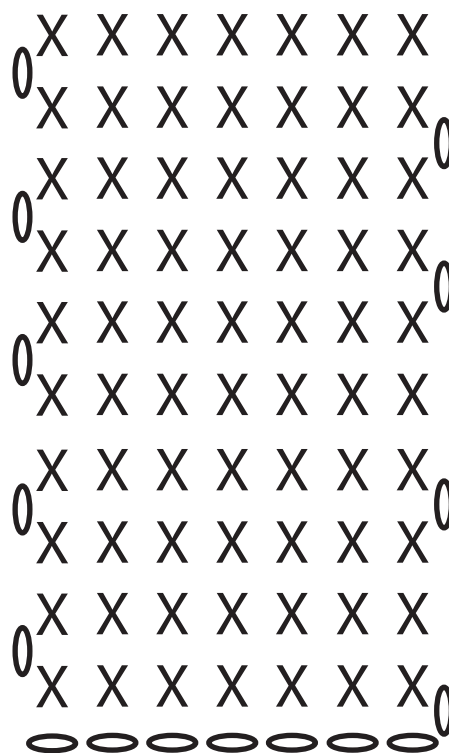


A crocheted Wall Hanging in XL Manga Yarn

A wall hanging crocheted as a square, attached to a stick. Use two balls of XL manga wool and No. 30 crochet hook.



How to

1: 7 ch

2: 1 dc

Turn at the end of each row with a cs. Continue with the 2nd row until the yarn runs out.



Step 1

Fold the top 8 cm around the stick. Fold the bottom up to the top.

Step 2

Sew the sides together and attach a string for hanging.

Abbreviations and symbols explanation:

O ch = chain stitch

X dc = double crochet

This pattern use the UK English crochet terms

