



Hanging Eggs with staggered Guinea Fowl Feathers

STEP BY STEP 01 02 03
Inspiration: 13546



Hanging Eggs with staggered Guinea Fowl Feathers

These polystyrene eggs are decorated with guinea fowl feathers glued on in a staggered fashion. A piece of doubled over leather cord decorated with a wooden bead is attached for hanging.



01
Apply small droplets of Clear Multi glue gel along the bottom of the egg. Now attach the smallest feathers from the package. The tip of the feather should face downwards all the way around the egg.



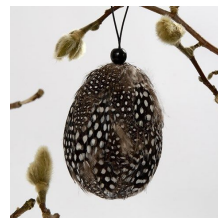
02
Decorate the egg with layered feathers around and around with the biggest feathers at the top. You may use pins to attach the feathers along the way.



03
Continue this process (illustrated) until the egg is completely covered. You may need to shorten some of the feathers if they are too long.



04
Make a hole at the top of the polystyrene egg and push some glue into the hole. Double over a 1mm thick piece of leather cord and thread a black wooden bead onto the cord ends for hanging. Insert both cord ends into the hole filled with glue.



Another example



Polystyrene Eggs, H: 8 cm, white, polystyrene, 5pcs 543240



Polystyrene Eggs, H: 8 cm, white, polystyrene, 50pcs 543241



Guinea fowl feathers, approx. 100 pc, brown, nature, 3g 51812



Goose feathers, round, approx. 8 cm, white, 3g 51816



Clear - Multi Glue Gel, 27ml 39047



Clear - Multi Glue Gel, 236ml 39048

Leather Cord, thickness 1 mm, black, 10m 51548

Natural Hemp, thickness 1-2 mm, natural, 30m 503244

Wooden Beads, D: 10 mm, hole size 3 mm, black, 20g, approx. 70 pc 570595

Wooden Bead, D: 10 mm, hole size 2.5 mm, china berry, 40pcs 566640

Head Pins, L: 31 mm, 200pcs 41120