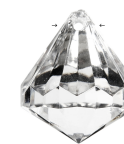




Prism chicks with hats

The small prism chicks are easy to make and look cute on a branch. □ Draw eyes on the wood bead and glue on a small cardboard beak. With DMC metallic thread push a needle through the top of the little straw hat, continue through the wooden bead, then through the hole in the pointed top of the prism. Then thread the needle back through the wooden bead and hat. Tie a knot on the hanging thread. Glue feathers onto the prism and glue the head onto the straw hat with a glue gun. □



Acrylic Beads, size 31x35 mm, hole size 2.5 mm, Gloss transparent, 6pcs 636840



Acrylic Beads, size 31x35 mm, hole size 2.5 mm, Gloss transparent, 50pcs 63684



Wooden Bead, D: 40 mm, hole size 7 mm, grass wood, 6pcs 56676



Wooden Bead, D: 20 mm, hole size 4 mm, china berry, 14pcs 56680

DMC Metallic Thread, thickness 0.36 mm, gold, 40m 51534

DMC Metallic Thread, thickness 0.36 mm, silver, 40m 51536

Feathers, size 7-8 cm, yellow, 50g 51665

Feathers, size 7-8 cm, yellow, 500g 51664

Card, A4 210x297 mm, 180 g, pillar box red, 20sheets 21114

Edding 404 Marker, line width: 0.75 mm, black, 1pc 25029